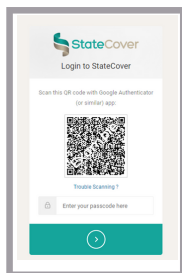


Multifactor Authentication: SMART and Figtree Systems

Upgrading online security for Members

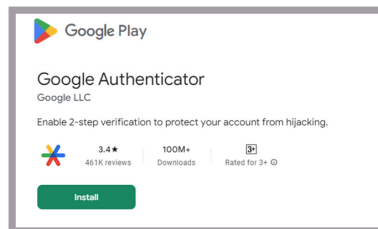
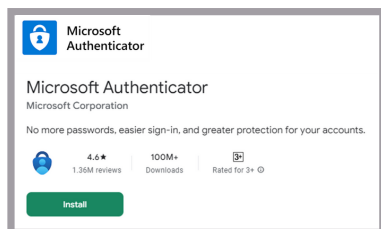
Log into the website



To access SMART and/or Figtree visit our website: www.statecover.com.au. Then:

1. Select Performance Reporting to access SMART or select Notify an Injury to access Figtree
2. You will then be directed to a window requiring a QR Code
3. To scan the code you will then need to set up your authenticator app. To do this you will need to download a preferred authenticator app to your phone.

Download an authenticator app

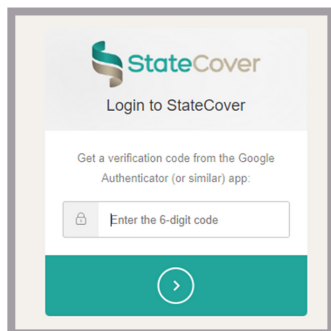


We recommend downloading either MICROSOFT AUTHENTICATOR or GOOGLE AUTHENTICATOR.

Both are free and accessible via any smart phone.

See next page for details on how to download, install and obtain your one time 6-digit token from your preferred authenticator app.

Logging into SMART or Figtree in future



Once you have set up your authentication app you will simply need to:

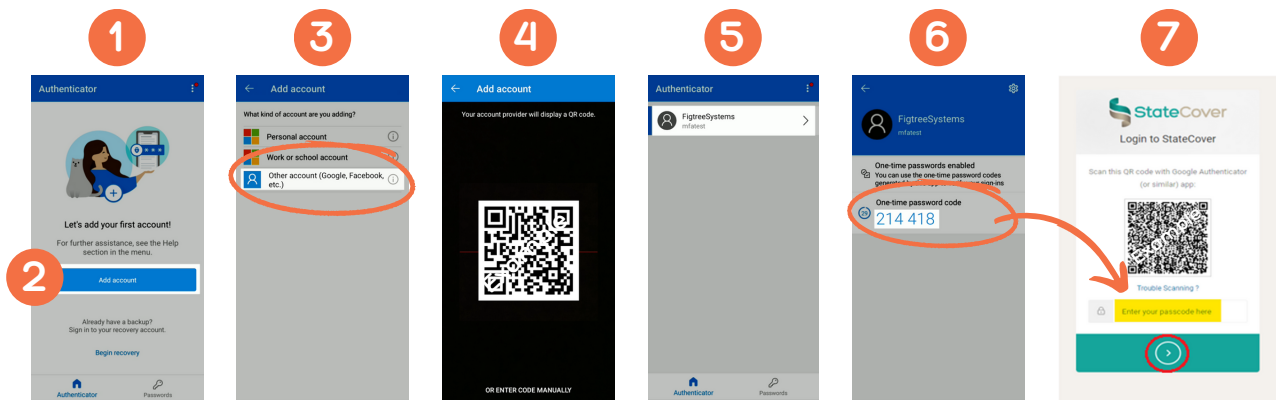
1. Go to the website: www.statecover.com.au and click through to the system you wish to access – SMART or Figtree
2. Open the authenticator app previously installed which will generate the one time six digit token
3. Enter this token as prompted into the StateCover Login on the StateCover webpage and click on the green enter button

You will be taken directly to the home screen for either Figtree or SMART

Launch Authentication App: Microsoft Authenticator

1. Launch app
2. Tap Add account
3. Select Other account
4. Scan the QR code from the web page
5. Select the newly added entry on the app e.g. Figtree systems
6. Enter the 6-digit token from the app into the web page
7. Click the green submit button on the web page

You are now successfully logged in.



Launch Authentication App: Google Authenticator

1. Launch app
2. Tap the + icon on the bottom right
3. Select Scan a QR code
4. Scan the QR code from the web page
5. Enter the 6-digit token from the app into the web page
6. Click the green Submit button on the web page
7. Tap ADD ACCOUNT

You are now successfully logged in.

